



**Disability
Together**

Because every
ability matters

5 Star Access

neil.warren@disabilitytogether.org.uk

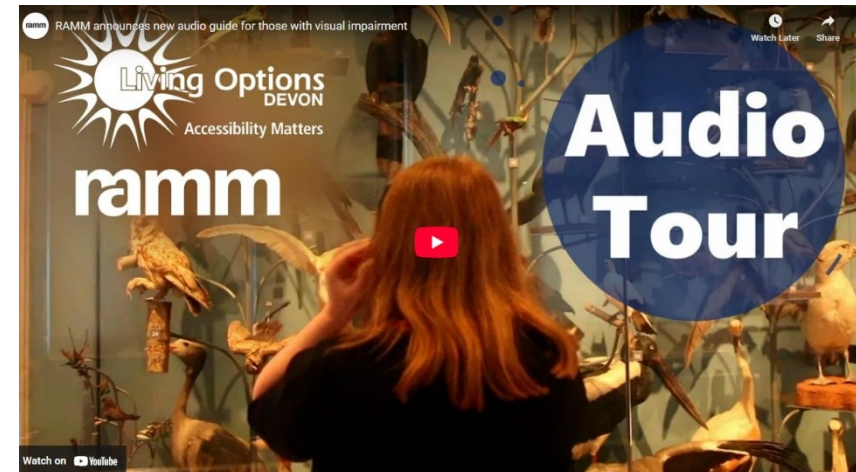
www.disabilitytogether.org.uk

Disability Together



Auditing
Training

**Alternative
formats**



Not just delivering but ‘delighting’



Gillian Scotford • 1st
Director at AccessibleUK
3mo • 🌐



The Grey Pound is so connected to The Purple Pound.
It is wonderful to experience the great accessibility of The Cavendish
Hotel [Chatsworth Estate Chatsworth & The Devonshire Group](#) and
Chatsworth House.
Well worth investing in Accessible Tourism, **delighting** your older guests who
don't class themselves as disabled but require many of the wonderful
accessible information, facilities and excellent customer service 💜

[Ross Calladine](#)



**Would using your accessible
facilities be an...**

upgrade

or

downgrade?

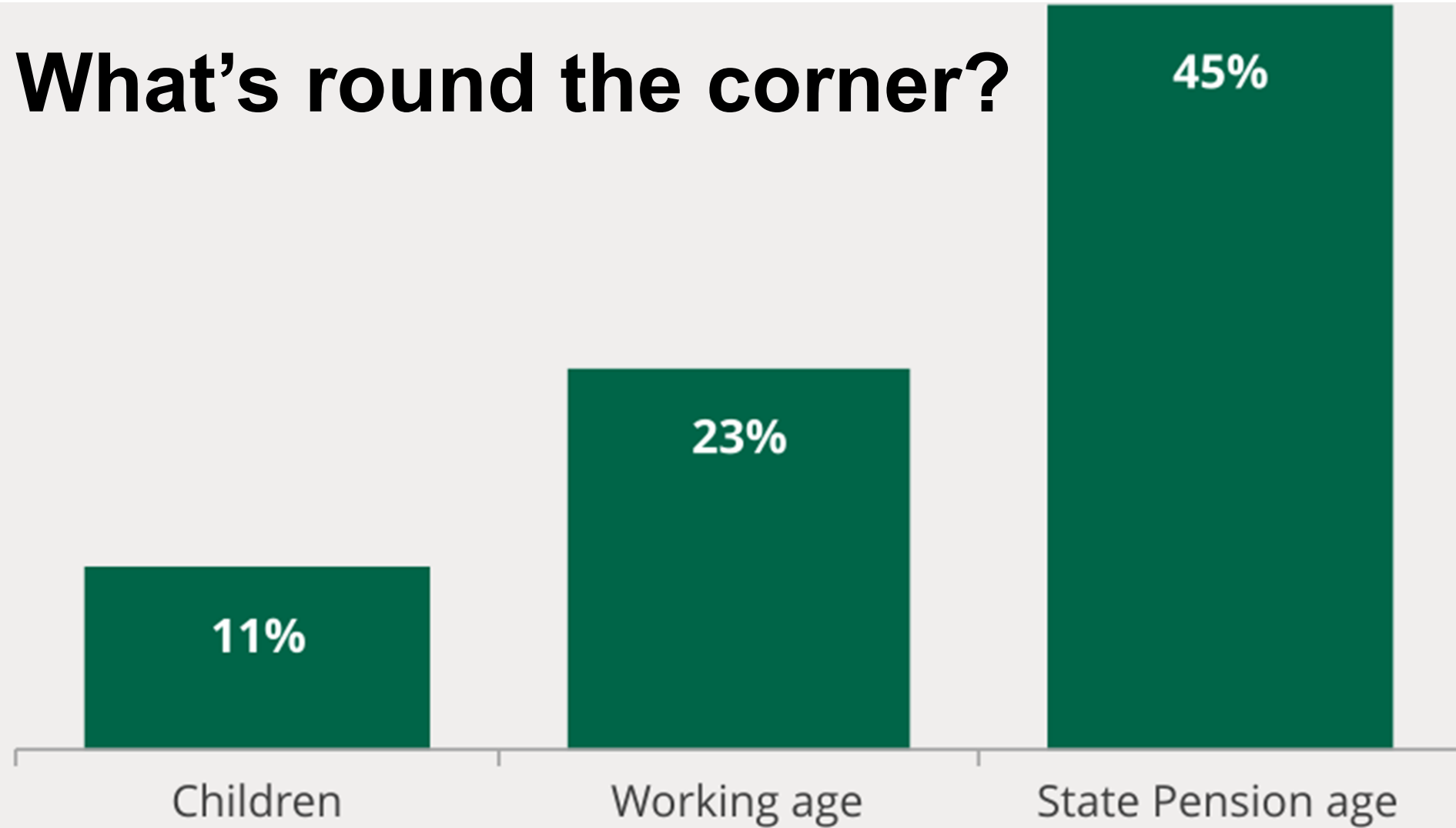
Accommodate

- What's necessary?
- Legal requirements
- Reasonable?
- Functional

Delight

- What's possible?
- Innovative
- Integrated
- Design

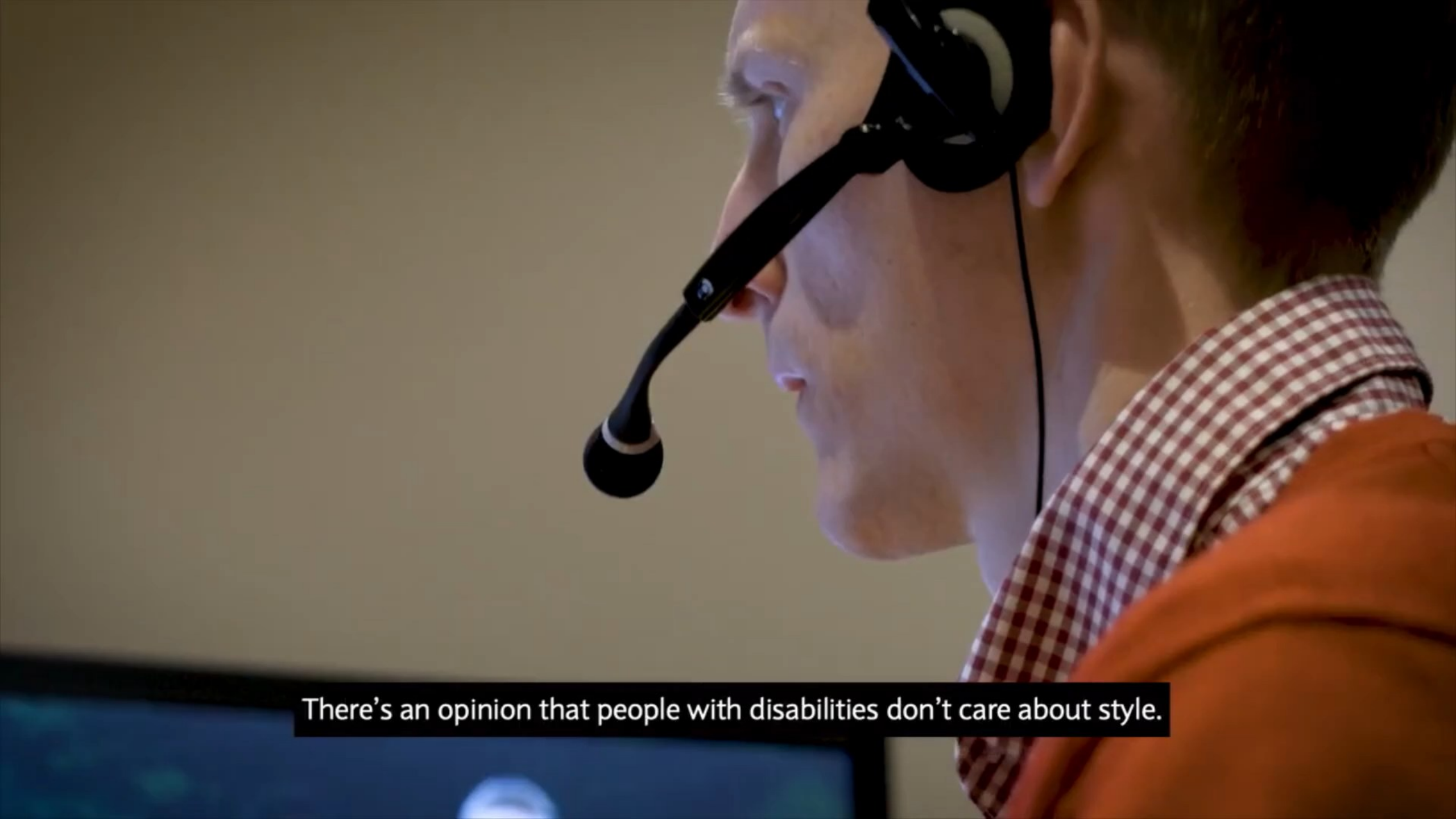
What's round the corner?



Source:
House of
Commons library
Research
Briefing: UK
Disability
Statistics (2024)

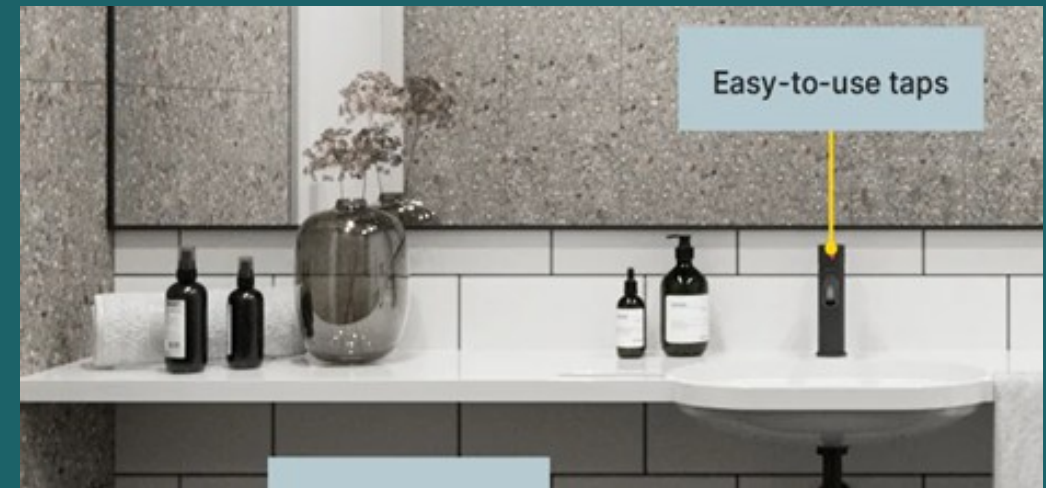
Don't Remind Me. Just Delight Me!

Well worth investing in Accessible Tourism...delighting your older guests who don't class themselves as disabled but require many of the wonderful accessible information, facilities and excellent customer service 💜



There's an opinion that people with disabilities don't care about style.





Inspirational not Institutional



First Impressions



Information

Before Your Visit

Start your day right with our helpful pre-visit information – Whether you're exploring the farm layout, checking food options, or preparing with our Sensory Story and Access Guide, everything you need for a smooth and enjoyable visit is right here.

Familiarisation Visits

We offer free 30-minute familiarisation visits for neurodiverse visitors and their families. These sessions help you explore the farm and get comfortable with the environment ahead of your full day out. To book, call [01527 661991](tel:01527661991) or email info@attwellfarmpark.co.uk.

Sensory Story

Our Sensory Story guides visitors through the sights, sounds, smells, and textures they might encounter on the farm, helping neurodiverse visitors feel prepared and at ease before they arrive.

Access Guide

Our Access Guide outlines everything you need to know about navigating the farm, from parking and paths to toilet facilities and quiet spaces.

Farm Park Map

Explore our inclusive map to easily locate your favorite animals, play areas, and facilities, designed to ensure all visitors can navigate with confidence.

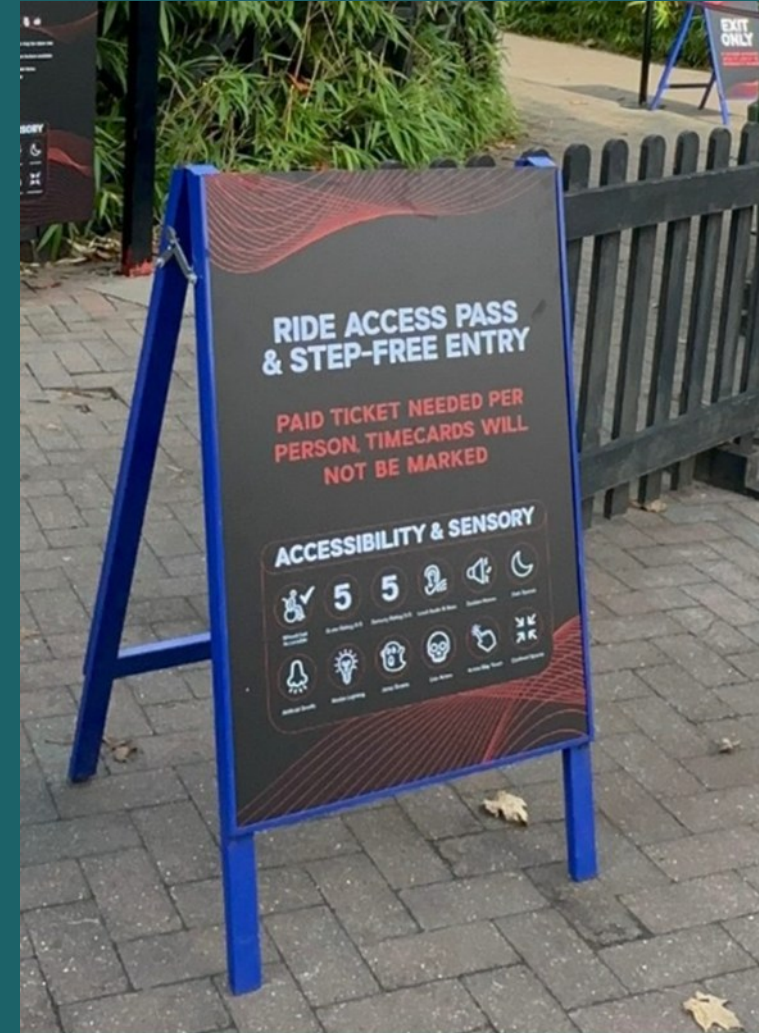
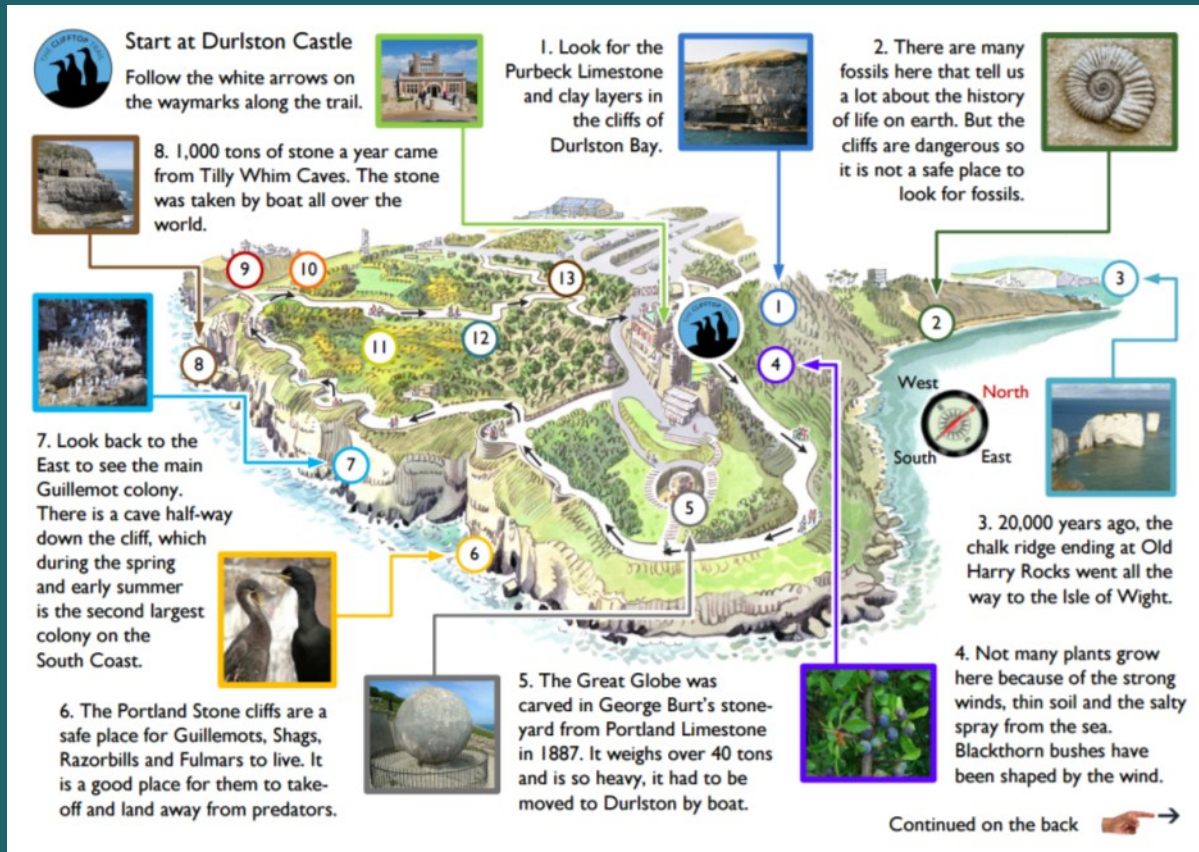
How to find us

Plan your journey with ease using our location guide

Food & Drink

Discover what food options are available at the farm, from snacks to full meals, including allergen-friendly options.

Information



Superior Experiences



Relaxed Performances

Relaxed performances are specifically designed for those who thrive in a more informal and relaxed setting. They include additional lighting and a friendly attitude to noise and movement inside the theatre (both voluntary and involuntary). Pre-show there will be a resource table in the foyer and the cast will introduce themselves, from the stage, before the show starts. A show experience guide will also be available, detailing any special effects and content. We can also offer some extra space if you need it, just let us know when you book.

Warm Welcome

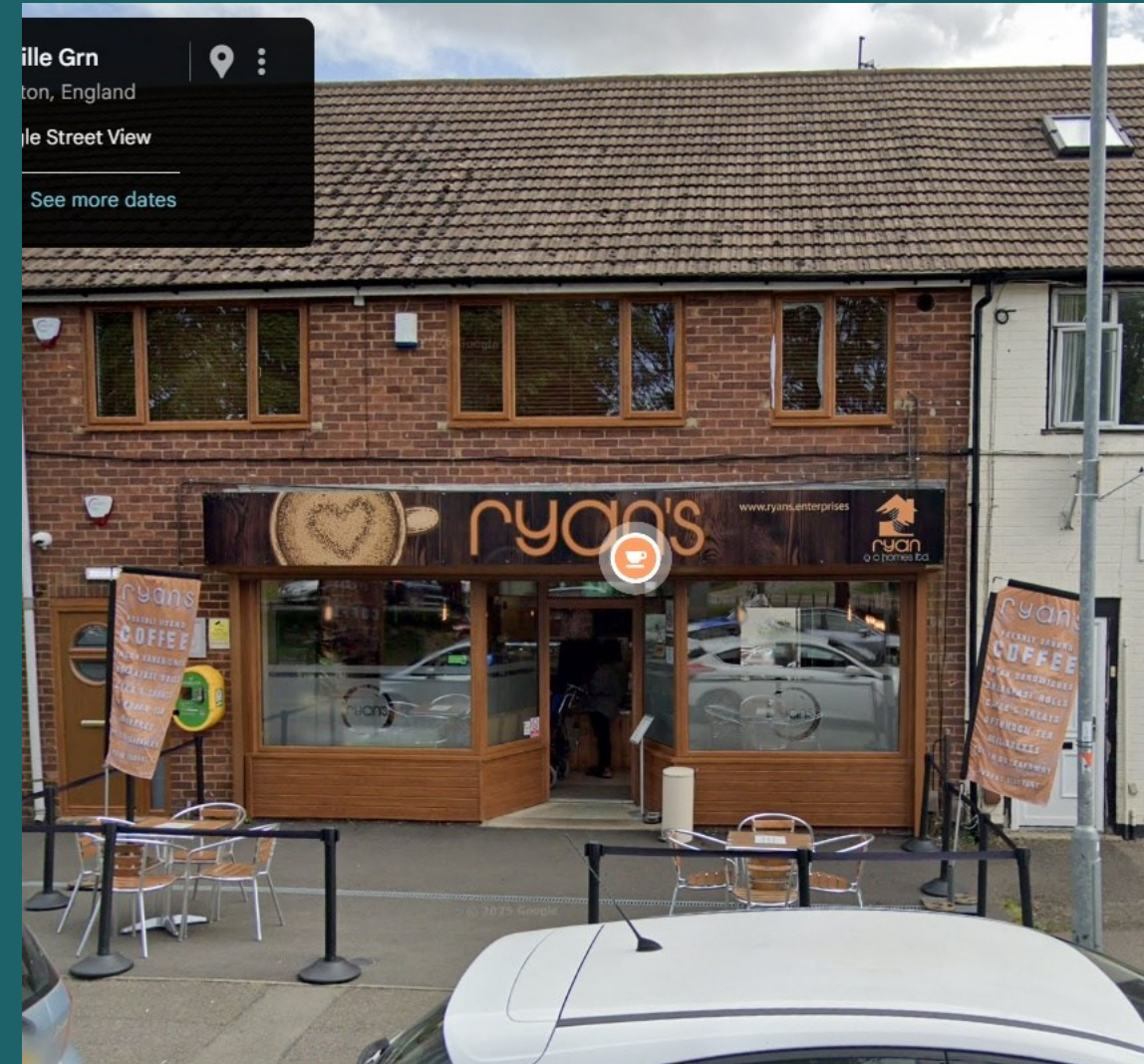
MEET OUR ACCESSIBILITY CHAMPIONS

At Attwell Farm Park, we are proud to have a team of dedicated Accessibility Champions who are here to ensure that every visitor has an exceptional and inclusive experience.

In addition to our ambassadors, we believe in the power of collective awareness and understanding. That's why all our team members receive comprehensive training in awareness courses, including autism awareness and disability awareness.

Moreover, they have a basic understanding of British Sign Language, equipped with hospitality phrases to facilitate effective communication with our diverse range of visitors.

We believe that fostering a welcoming and inclusive environment goes beyond specific roles, and it is ingrained in our entire team. Together, our Accessibility Champions and trained team members are committed to providing the highest level of support and assistance, ensuring that everyone can fully enjoy their visit to our farm.



**Would using your accessible
facilities be an...**

upgrade

or

downgrade?